

# Is it checkmate?

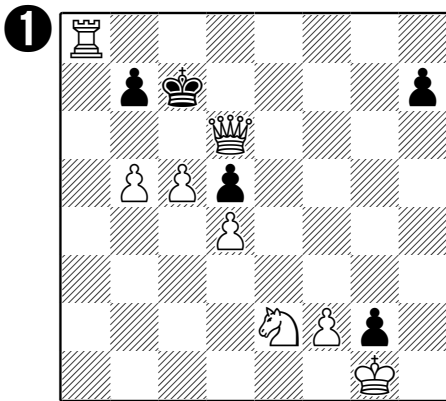


In each of these pictures, it's black's turn to move. You have to work out **whether black is in checkmate** or not.

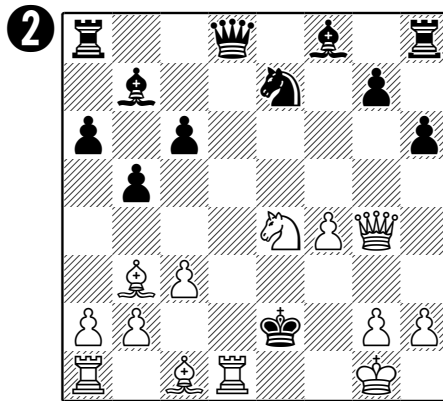
Once you've worked it out, tick 'yes' if you think it's checkmate and 'no' if it isn't.

If it's not checkmate, please also show a move that black can make by drawing an →

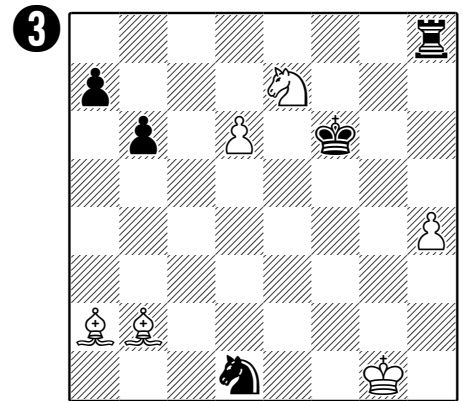
Remember - look out for **C**apturing, **B**locking and moving the king **A**way.



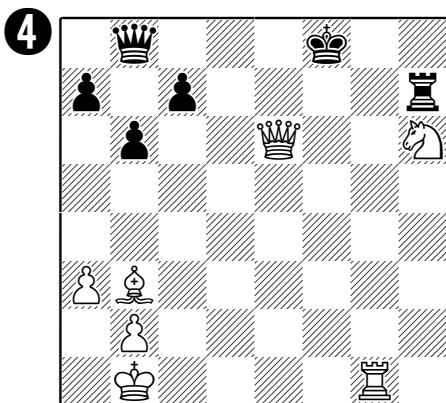
Yes, it is checkmate  
 No, it's not checkmate



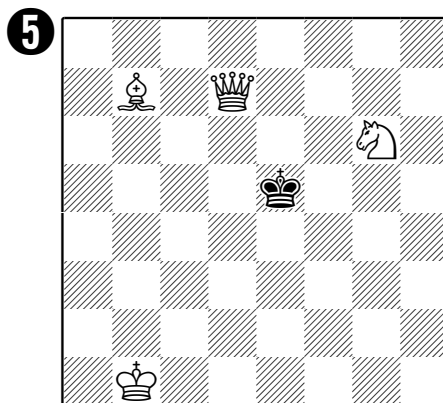
Yes, it is checkmate  
 No, it's not checkmate



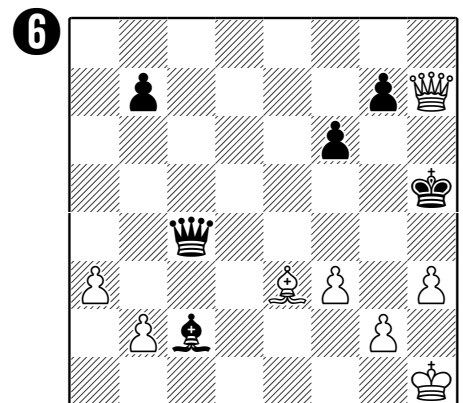
Yes, it is checkmate  
 No, it's not checkmate



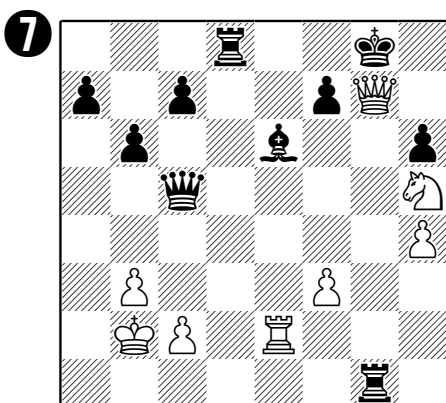
Yes, it is checkmate  
 No, it's not checkmate



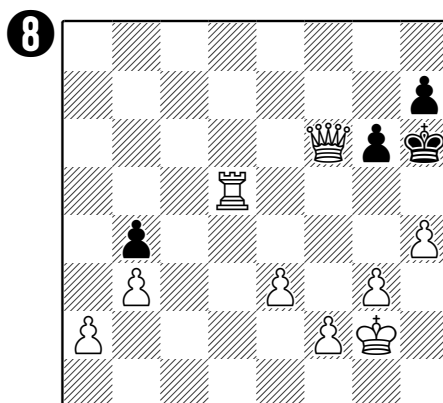
Yes, it is checkmate  
 No, it's not checkmate



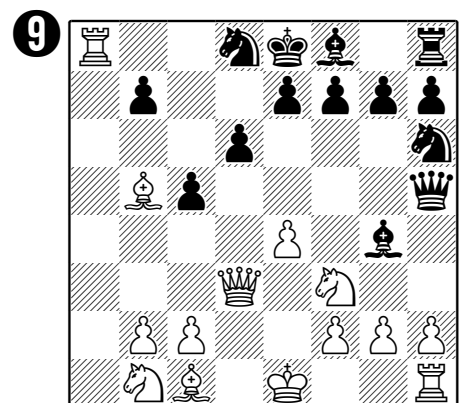
Yes, it is checkmate  
 No, it's not checkmate



Yes, it is checkmate  
 No, it's not checkmate



Yes, it is checkmate  
 No, it's not checkmate



Yes, it is checkmate  
 No, it's not checkmate